



Stories & Memories of Restalrig,
Lochend & Craigentenny

*sharing what we learnt
from 70 local people in 2022*

An aerial photograph of a suburban residential neighborhood. The image shows a dense arrangement of houses with light-colored roofs and green lawns. A network of roads, including a prominent roundabout, is visible. In the lower-left quadrant, there is a large green field, possibly a sports field, and a wooded area with a pond. The overall scene depicts a typical suburban community.

What's it like here?



View from Lochend Park 2022



Restalrig village 2022



Nisbet Court 2022



social issues 2021



Leith Gala day 2018



Lochend Park 2016

People said this place had...

- a suburban feel
- urban challenges
- increasing diversity
- a strong sense of community
- a unique & rich history





Where do we go?



Loganlea Playpark 2022



crafting at The Ripple Project 2021



EDEN.MILL
ST ANDREWS

PORTEOUS

5



erry Healy
Group

Hibs playing at Easter Road Stadium



tending allotments, Craigentenny 2022



Bunch o' Roses pub 2019





corncockle and speedwell 2021

the
ripple

RESTALRIG LOCHEND
COMMUNITY HUB

ripple
HUB GRUB CAFE

ripple
HUB GRUB CAFE

198

198

CAFE OPEN
Mon to Fri
11am to 3.30pm
Full service catering for
weddings open to public

LITTLE FREE
LIBRARY
Lend a book
Take a book

Community Hub 2022

We go to...

- parks
- allotments
- shops, pubs, sport
- wildlife
- community centres
- local events





What do we know
and remember?

Newsagent, Restalrig Village 1950s





Restalrig around 1850



Munro Factory 1920

Munro's Factory, Restalrig.

Ingram & Co.'s Se

St Triduana's Aisle 1789 and 1989

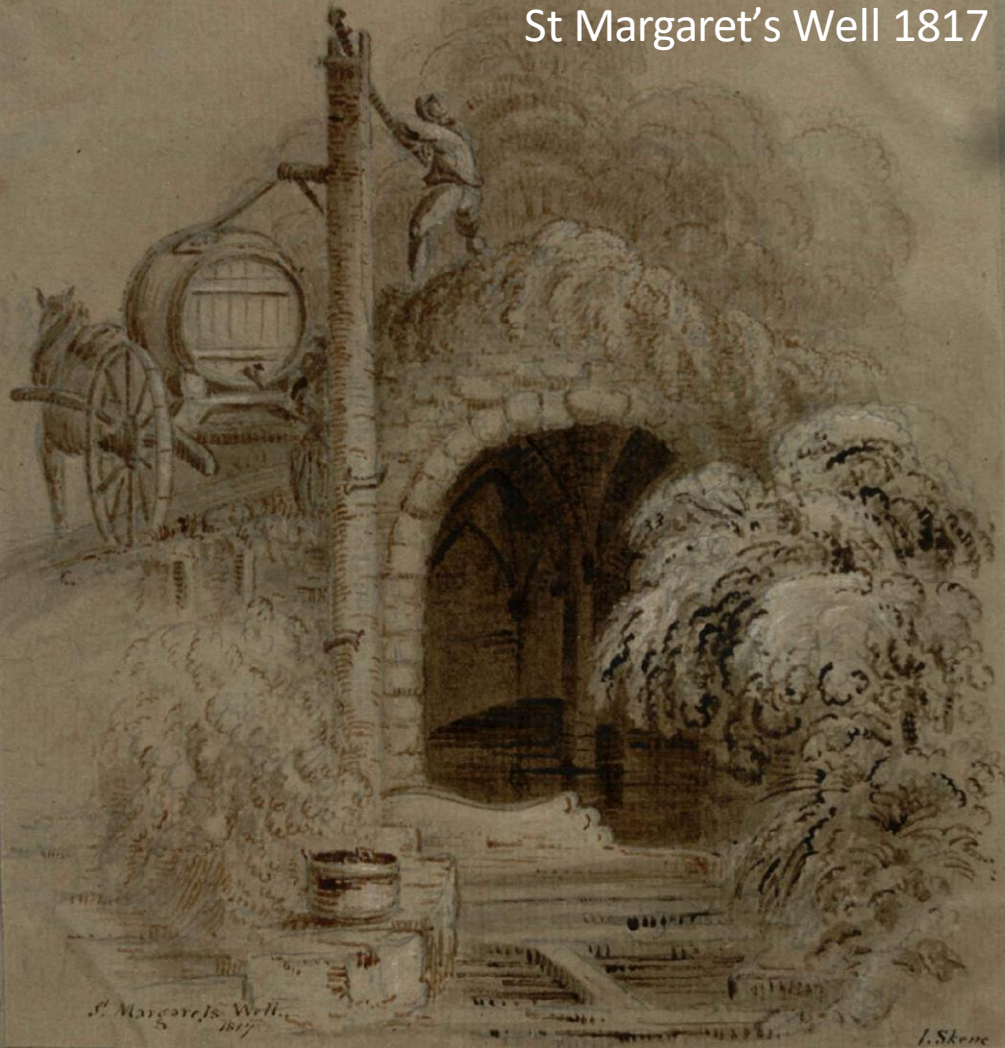




Craigentenny Castle 1860

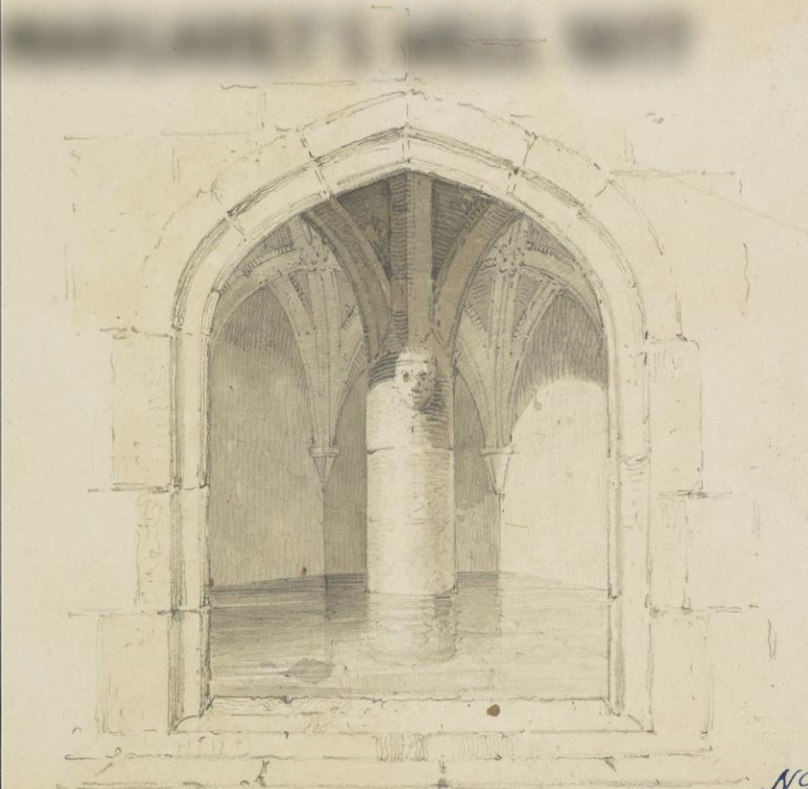
A.S.R. 1860

St Margaret's Well 1817



St. Margaret's Well
1817

J. Skene



at Birstalney near Edinburgh

NG

B



NOTICE

Craigentenny 1885

Smiths of Hawkhill 1953



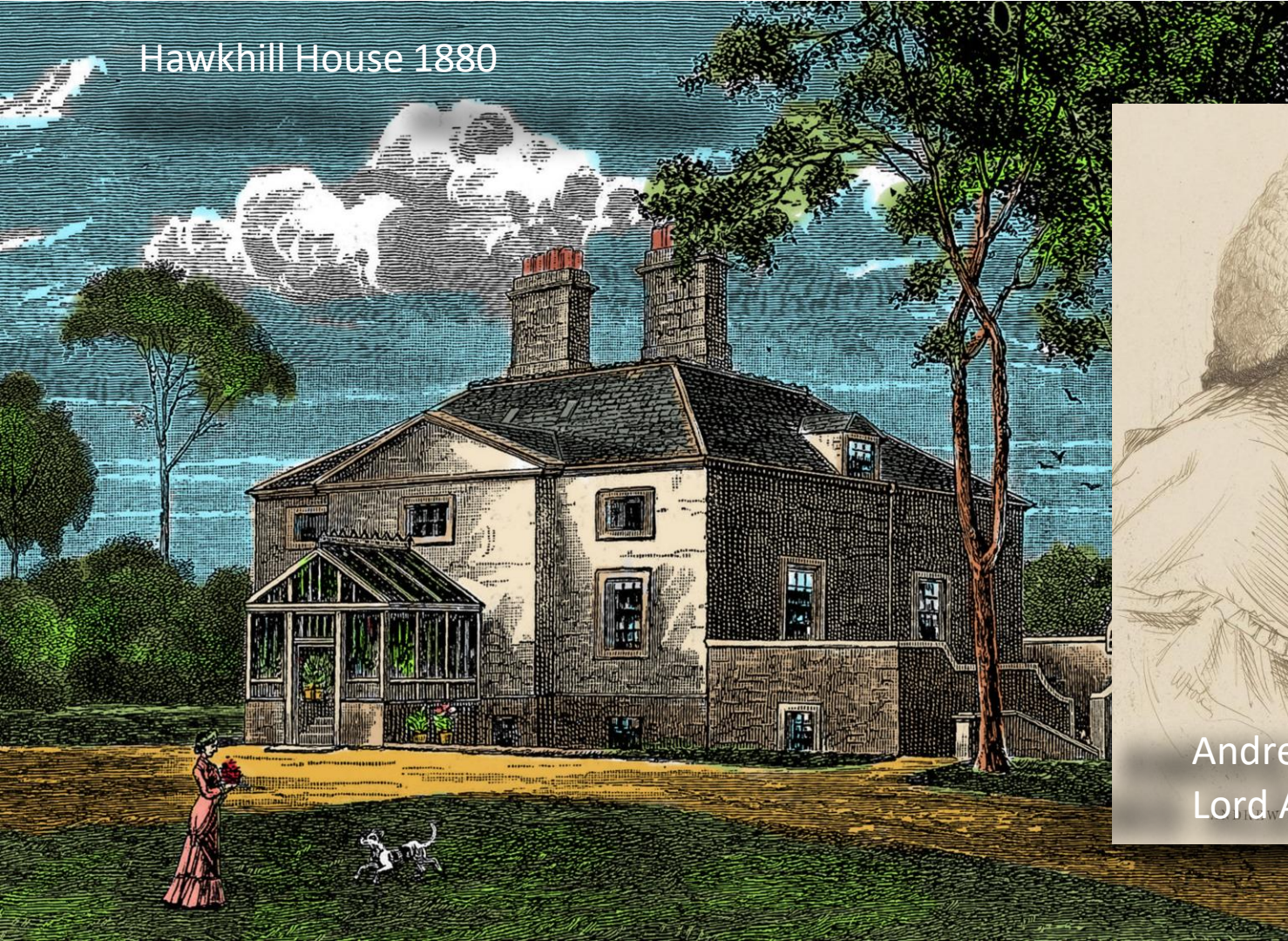


Lochend, early 1900s

HARVESTING NEAR LOCHEND HOUSE.

PHOTO BY H. RILEY, COPYRIGHT.

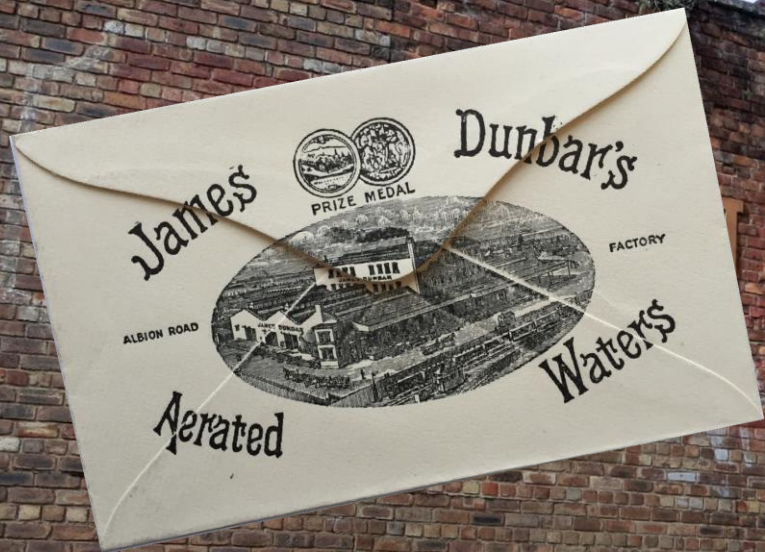
Hawkhill House 1880



Andrew Pringle,
Lord Alemore, 1760

Lochend Loch looking towards Hawkhill 1780





JAMES DUNBAR'S

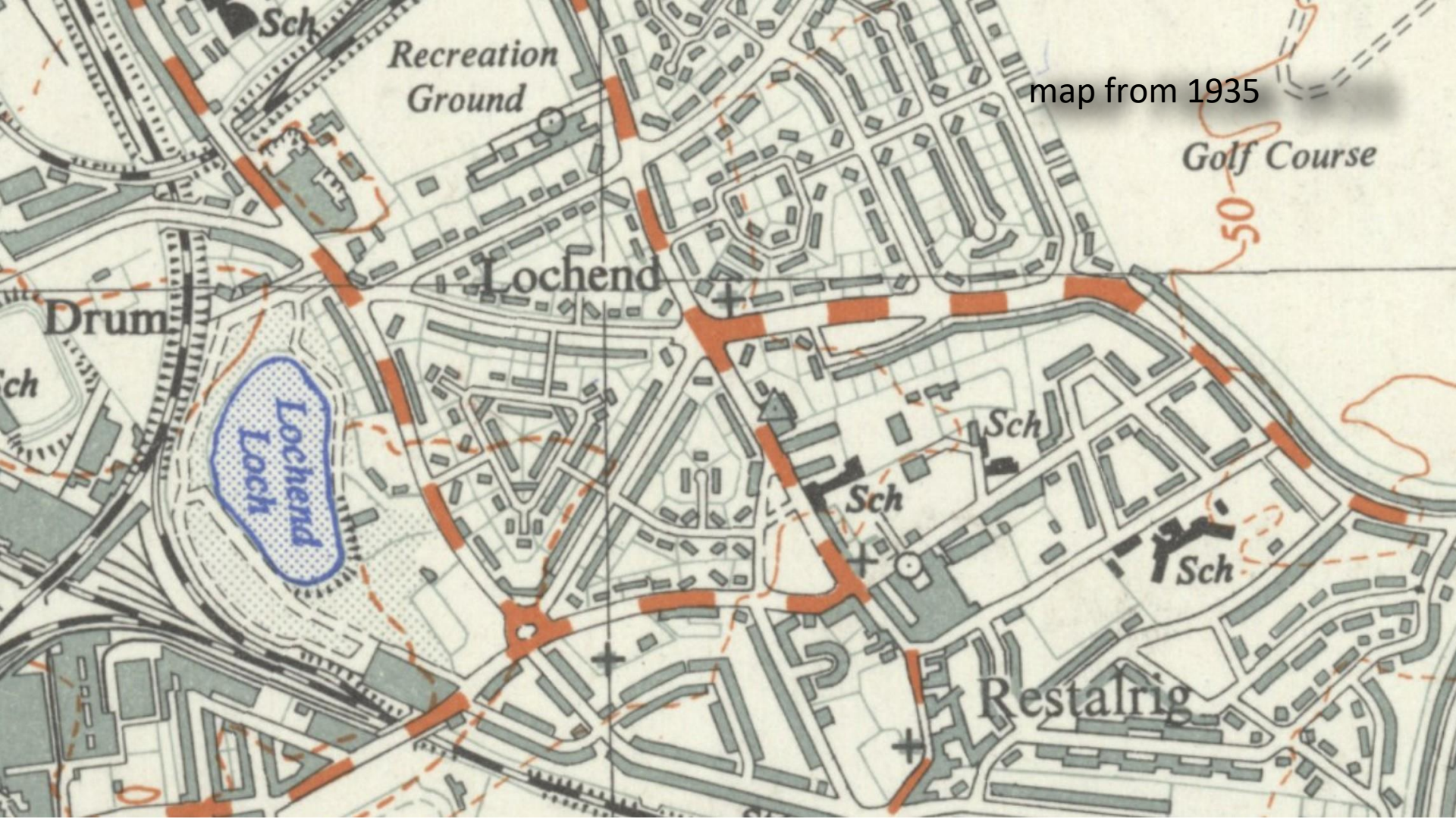
James Dunbar's Aerated Water Factory 2010

bomb damage in Craigentenny 1942





housing 1977 and 1925



Recreation
Ground

map from 1935

Golf Course

50

Lochend

Drum

Lochend
Loch

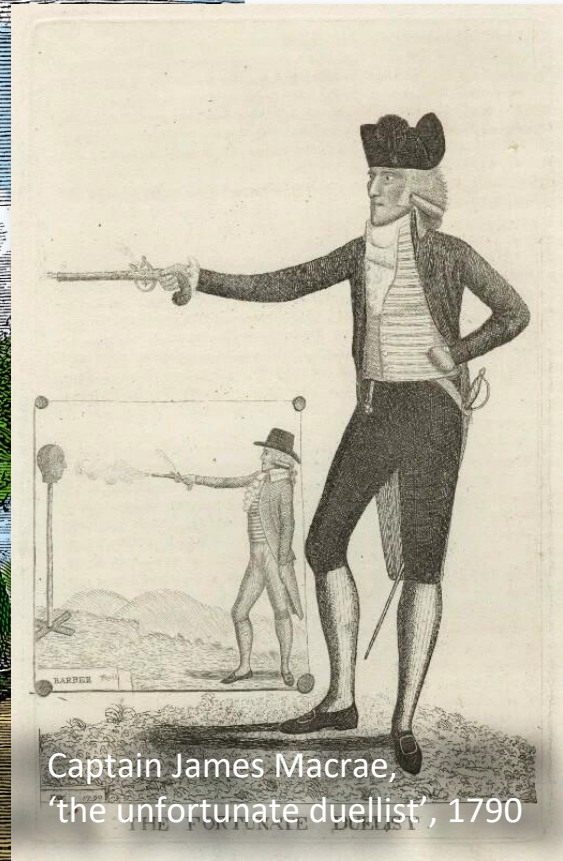
Sch

Sch

Sch

Restalrig

Marionville House, 1880



Captain James Macrae,
'the unfortunate duellist', 1790



Craigentenny Castle 1880

Eastern General Hospital 2010



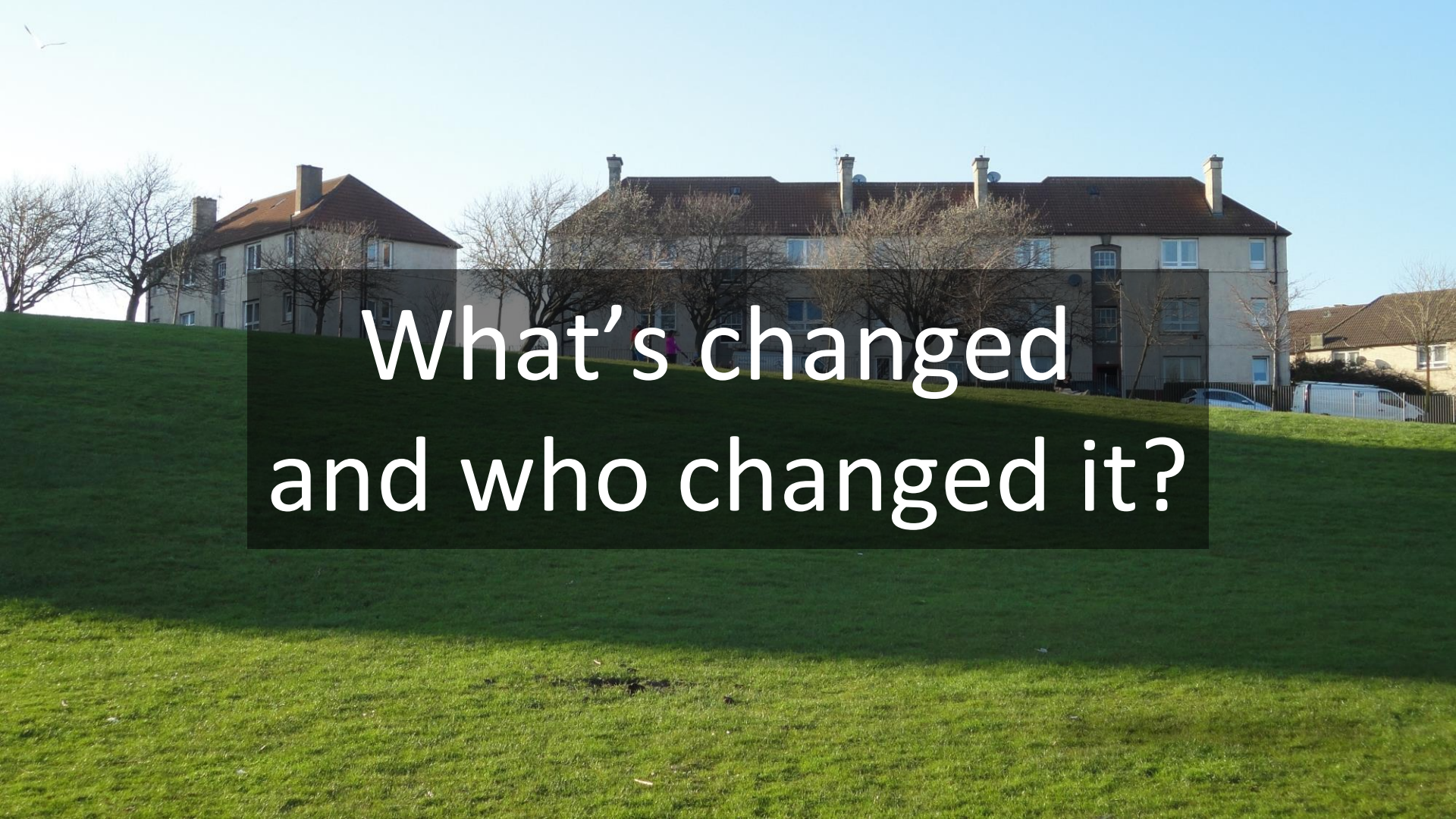


Lochend Cottages 1922

People in our survey mentioned...

- significant people, events and places
- the impact of two world wars
- historic industries
- the place as a microcosm of Scotland
- lives improved from living here





What's changed
and who changed it?



Ewan Aitken discussing history 2022



new housing 2015



new cycle paths



empty benches during Covid lockdown 2020

COMMUNITY GARDEN IN PROGRESS

EVERYONE WELCOME

Join us on   @ CRAIGENTINNY COMMUNITY GARDEN

new Craigentenny Community Garden 2022

FRUITERER AND CONFECTIONER

96

93

KEMPS CORNER

KEMPS CORNER

93

Kemp's Corner in 2022



community litterpicks




a more welcoming community

People told us they could see...

- better facilities
- better community engagement
- less crime/anti-social behaviour
- improving housing & safety
- a more welcoming community



A detailed site plan map of a park or sports field. The map features several soccer fields with white boundary lines. A central path or road network is shown in grey. Various areas are labeled with letters in circles: 'A' (a large grey oval on the left), 'B' (a grey oval at the bottom right), 'L' (a brownish area with trees in the upper left), and 'F' (a circle in the center of a soccer field). Numbers in circles are scattered throughout: '6' (top left and top right), '10' (two locations near 'L'), '4' (two locations), '12' (two locations), '14' (bottom right), '20' (bottom right), and '2' (bottom center). There are also green circular shapes representing trees and some small colored squares (red, blue, green) indicating specific points of interest. A semi-transparent dark grey rectangle is overlaid on the center of the map, containing the text 'What do we hope for?' in white.

What do we hope for?



more and better playparks?



cross trainer

Shoulder Press Technique	Trainers Tip
	1.5
	1.0
	1.5

better ways to stay healthy?



more space for wildlife?



more sports facilities?



EDINBURGH
TOOL
LIBRARY



more community workshops?



more community events?



better childcare?



The Olive Stall
All our olives are

A celebration of all things Local
HANDY STALLS - VISIT OUR WEBSITE

SALE
£2.75

more community markets?



more allotment space?

And now, over to you...

- how can we make our area better?
- what would better look like?



Presented by:

Carol Stobie, Joan Robertson, Hetty Lancaster, Ross Cullen

Designed by:

Deborah Mullen

Photos by:

Deborah Mullen, Hetty Lancaster, Joan Robertson

Other images from CAPITAL COLLECTIONS, NATIONAL LIBRARY OF SCOTLAND, HISTORIC ENVIRONMENT OF SCOTLAND/CANMORE, Adobe stock photos

