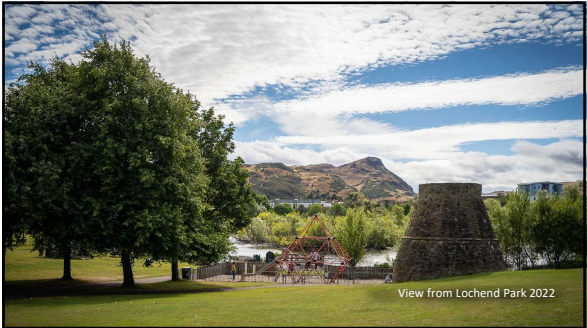




Stories & Memories of Restalrig,
Lochend & Craigentenny

*sharing what we learnt
from 70 local people in 2022*




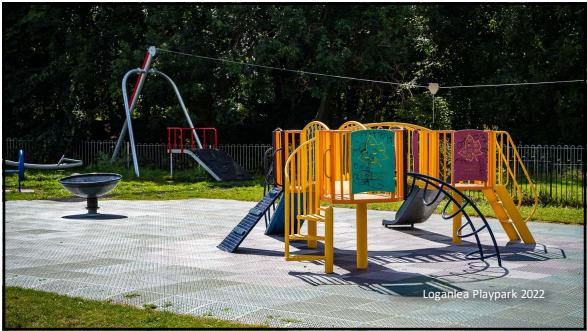




People said this place had...

- a suburban feel
- urban challenges
- increasing diversity
- a strong sense of community
- a unique & rich history









We go to...

- parks
- allotments
- shops, pubs, sport
- wildlife
- community centres
- local events







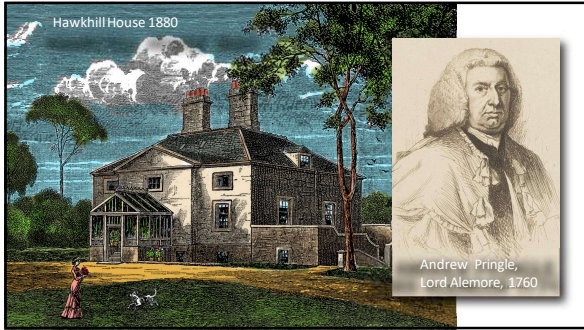
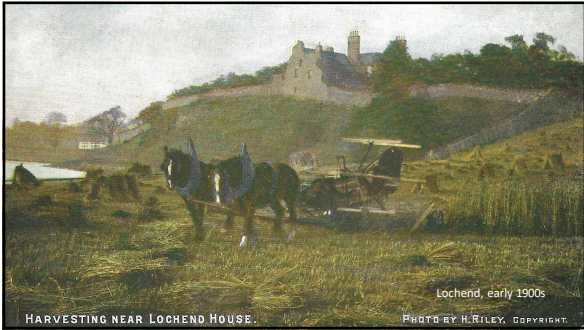
Craigentinny Castle 1860

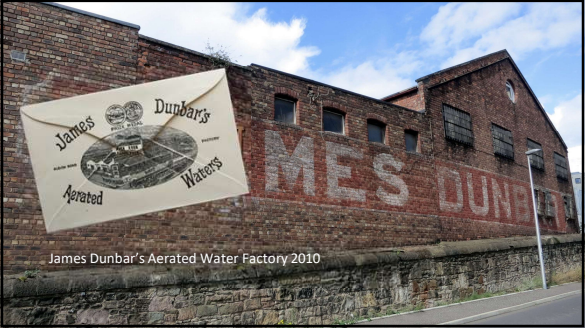


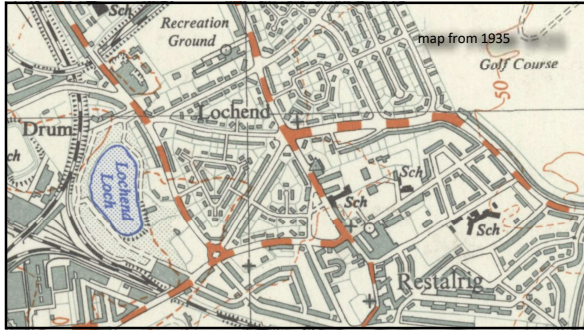
St Margaret's Well 1817



Craigentinny 1885







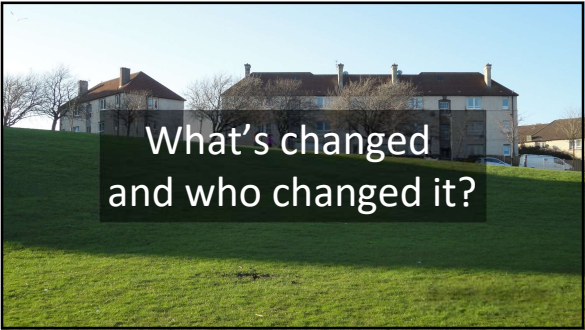


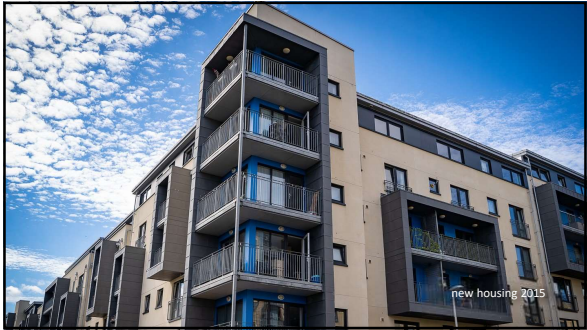


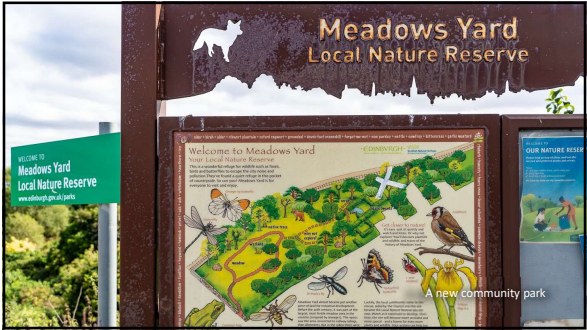


People in our survey mentioned...

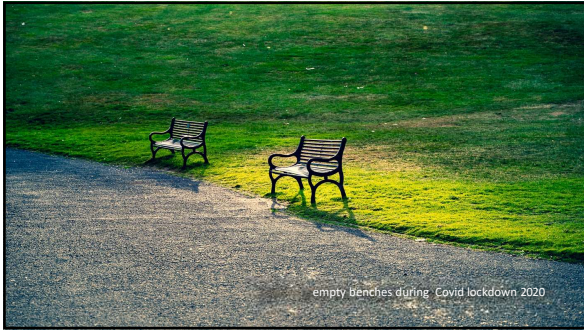
- significant people, events and places
- the impact of two world wars
- historic industries
- the place as a microcosm of Scotland
- lives improved from living here



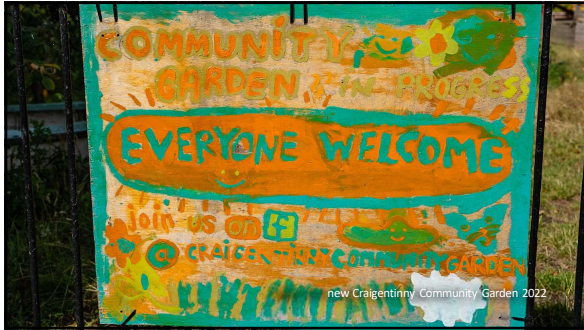








empty benches during Covid lockdown 2020



new Craigsburg Community Garden 2022



Kemp's Corner in 2022



People told us they could see...

- better facilities
- better community engagement
- less crime/anti-social behaviour
- improving housing & safety
- a more welcoming community

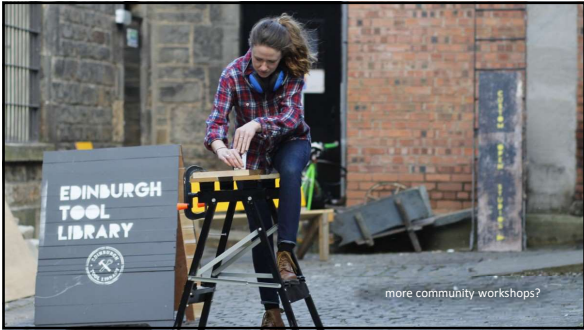


The logo for "The People's Parish" features a stylized green and yellow landscape with a white house icon and the text "THE PEOPLE'S PARISH" to the right.













And now, over to you...

- how can we make our area better?
- what would better look like?



Presented by:
Carol Stobie, Joan Robertson, Hetty Lancaster, Ross Cullen

Designed by:
Deborah Mullen



Photos by:
Deborah Mullen, Hetty Lancaster, Joan Robertson

Other images from CAPITAL COLLECTIONS, NATIONAL LIBRARY OF SCOTLAND, HISTORIC ENVIRONMENT OF SCOTLAND/CANMORE, Adobe stock photos
